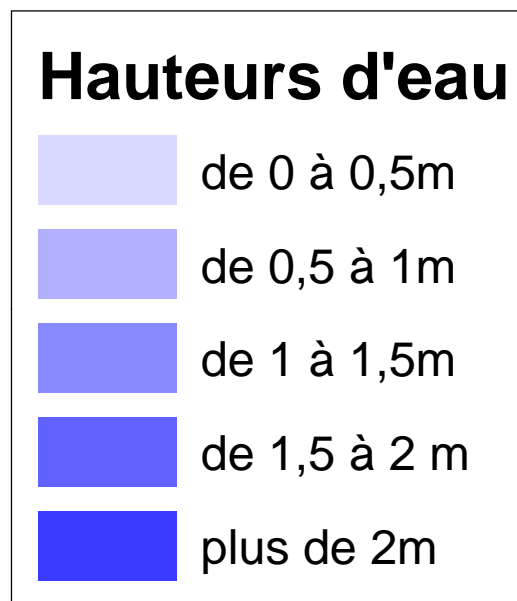


CRUE TRENTENNALE

Echelle : 1 / 5 000



Hôpital



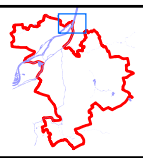
Ecole



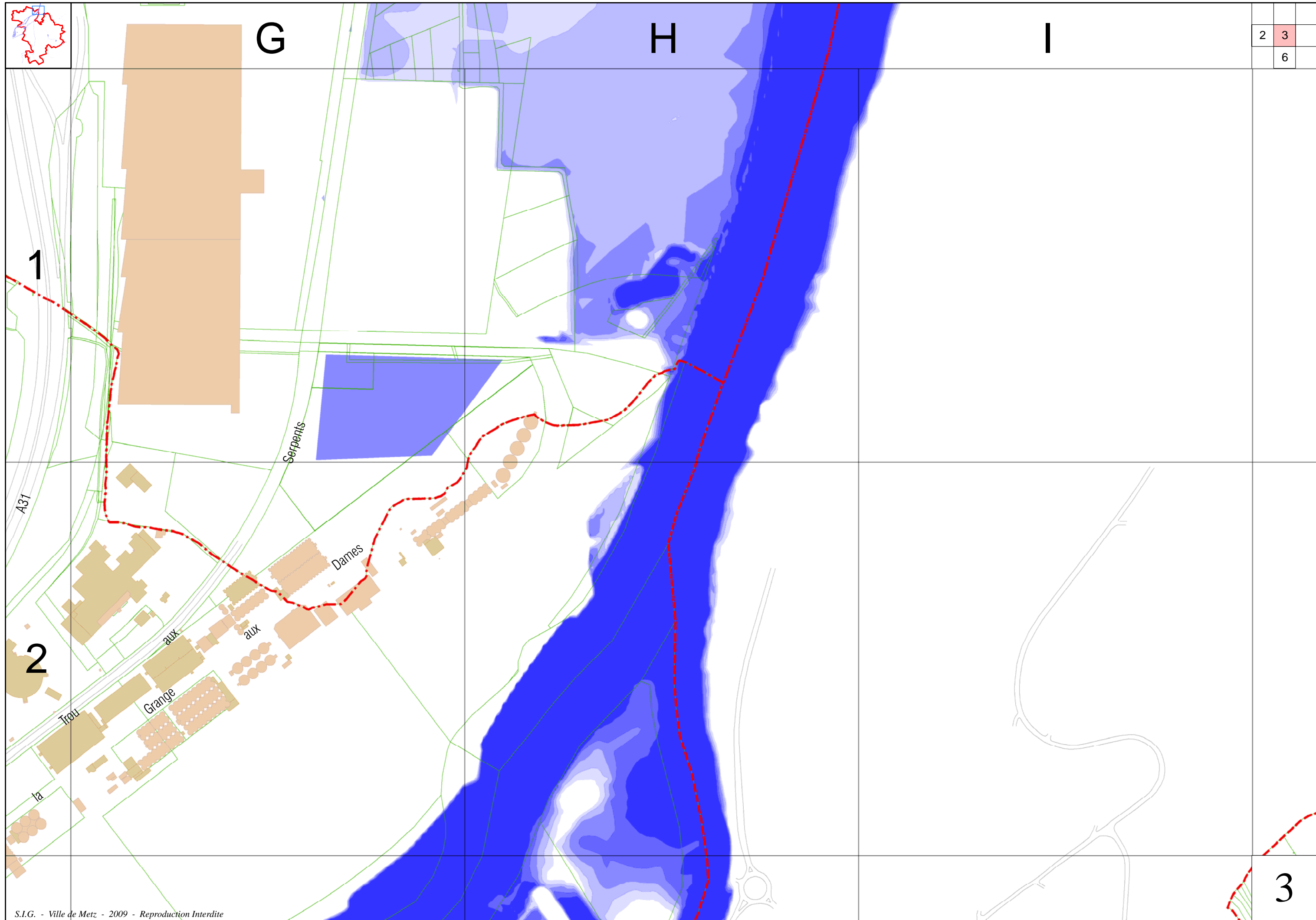
Gymnase

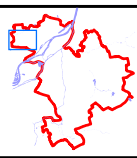


Bâtiment municipal

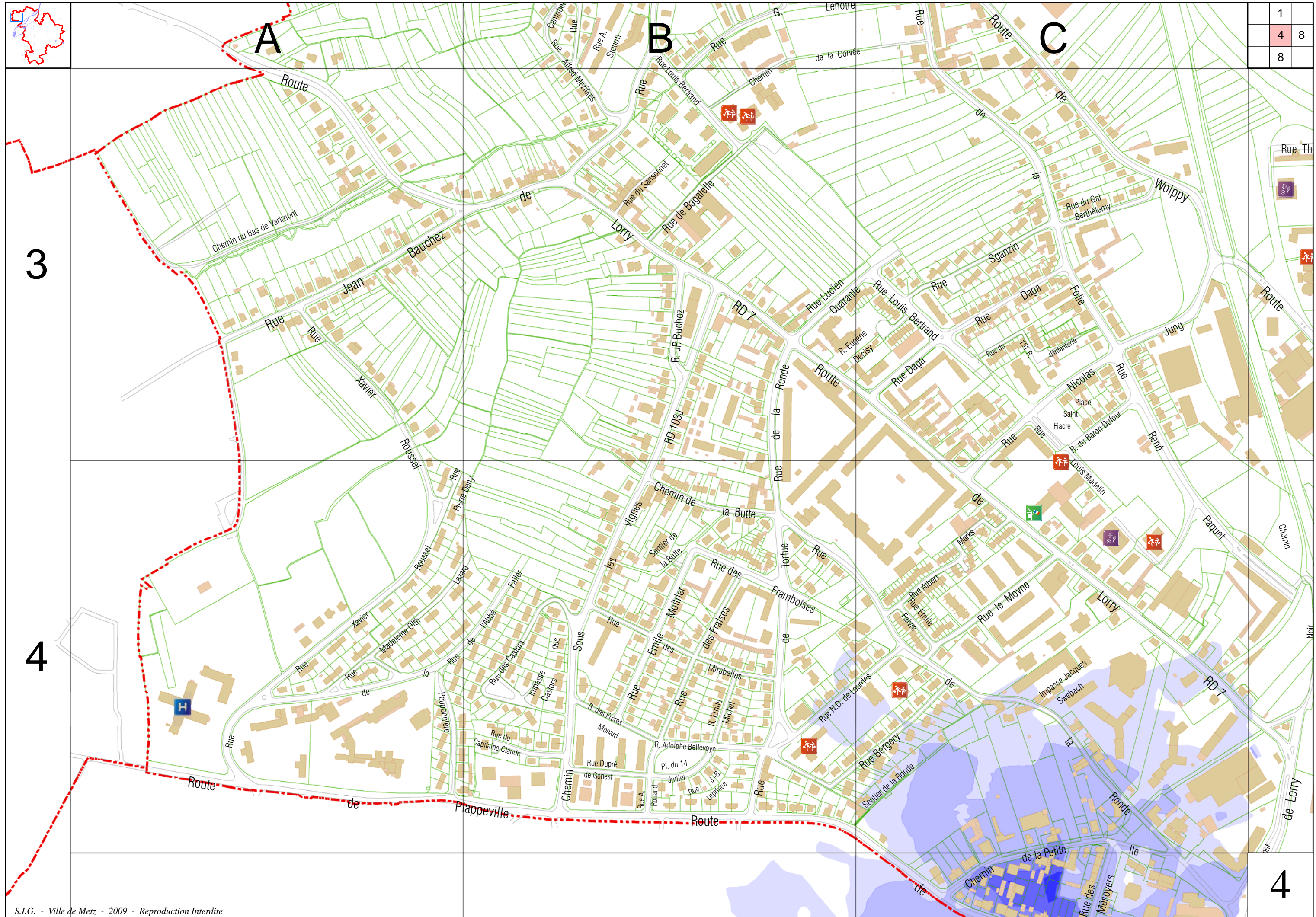


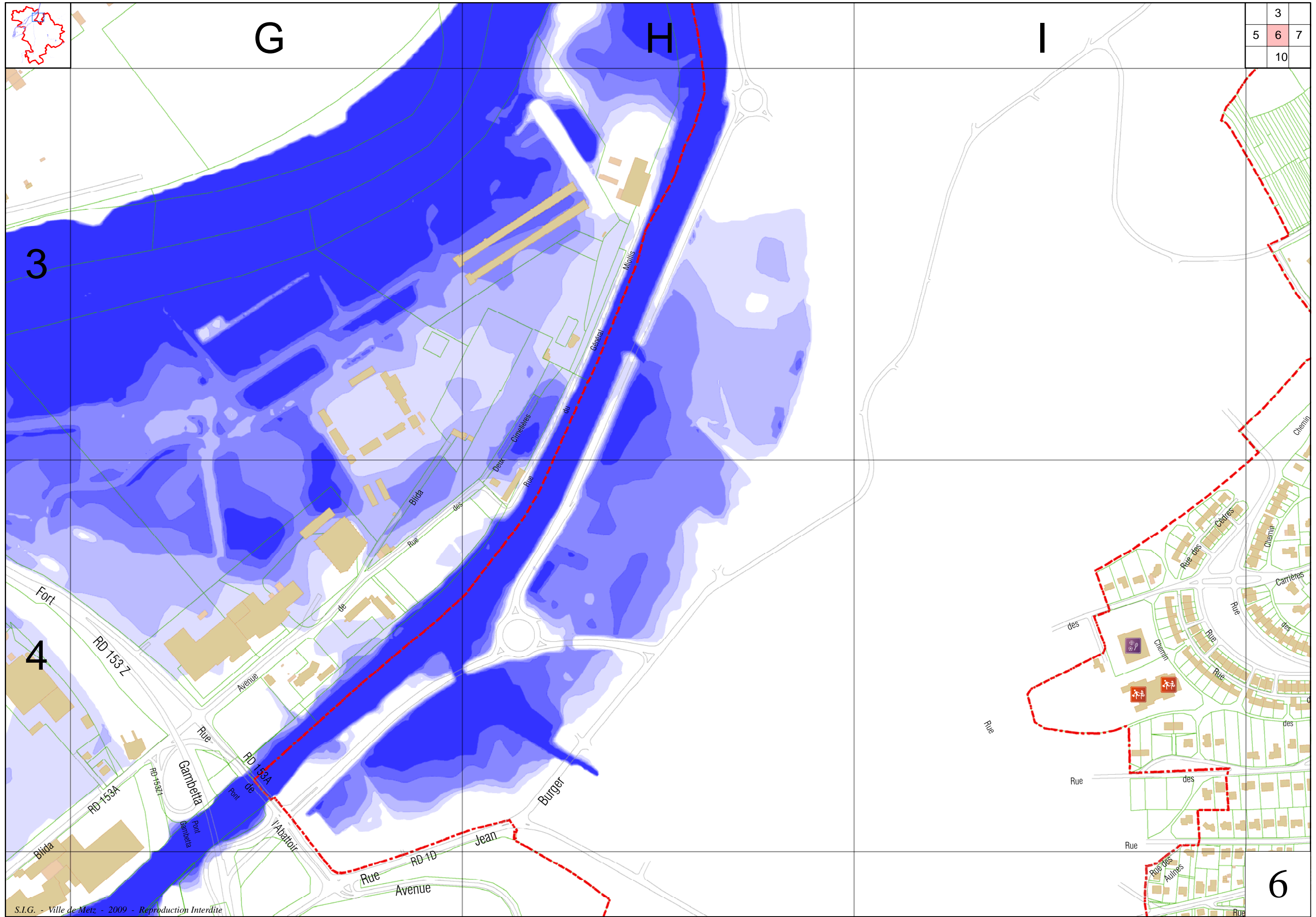
2	3
	6

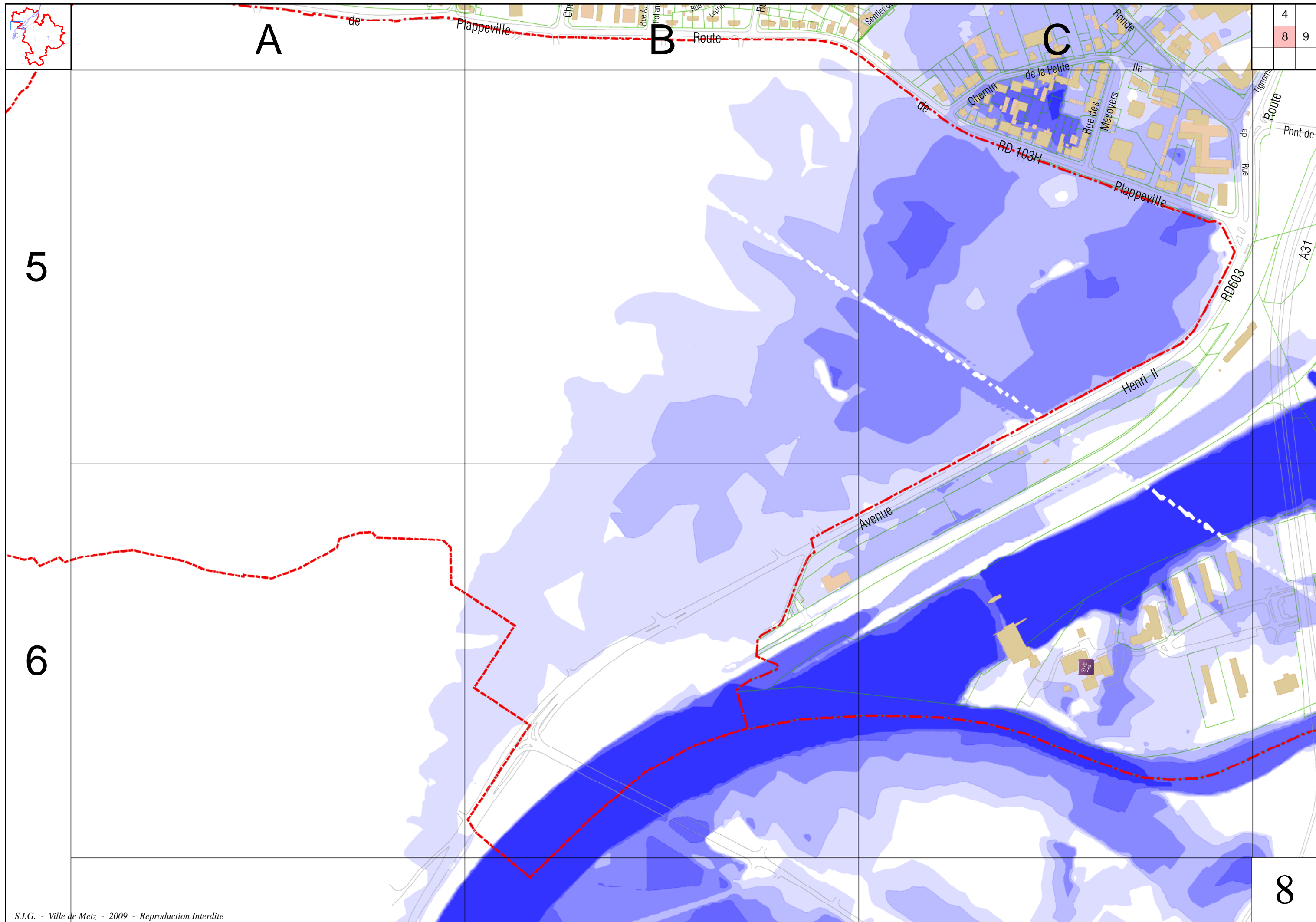




1	
4	8
8	



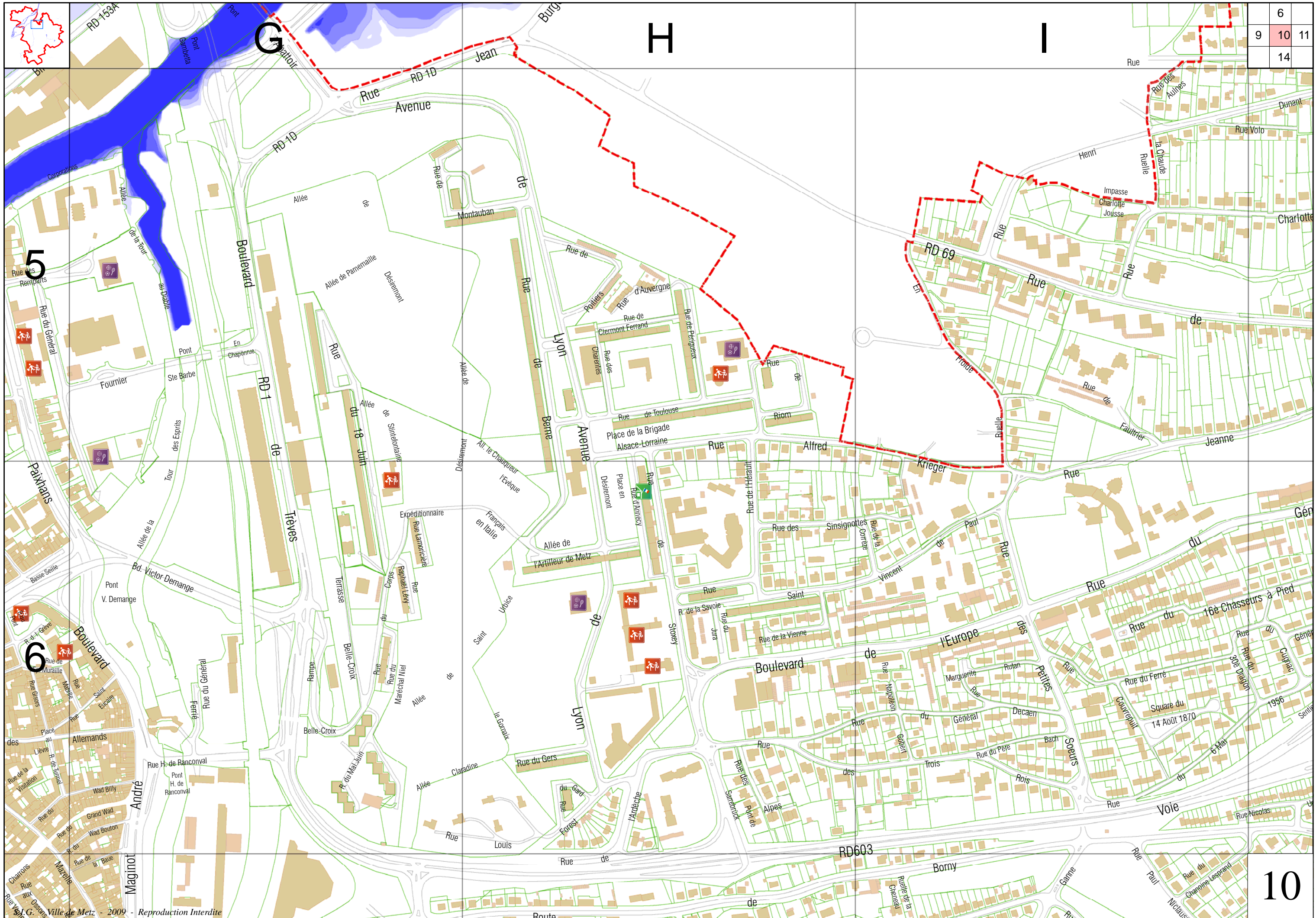




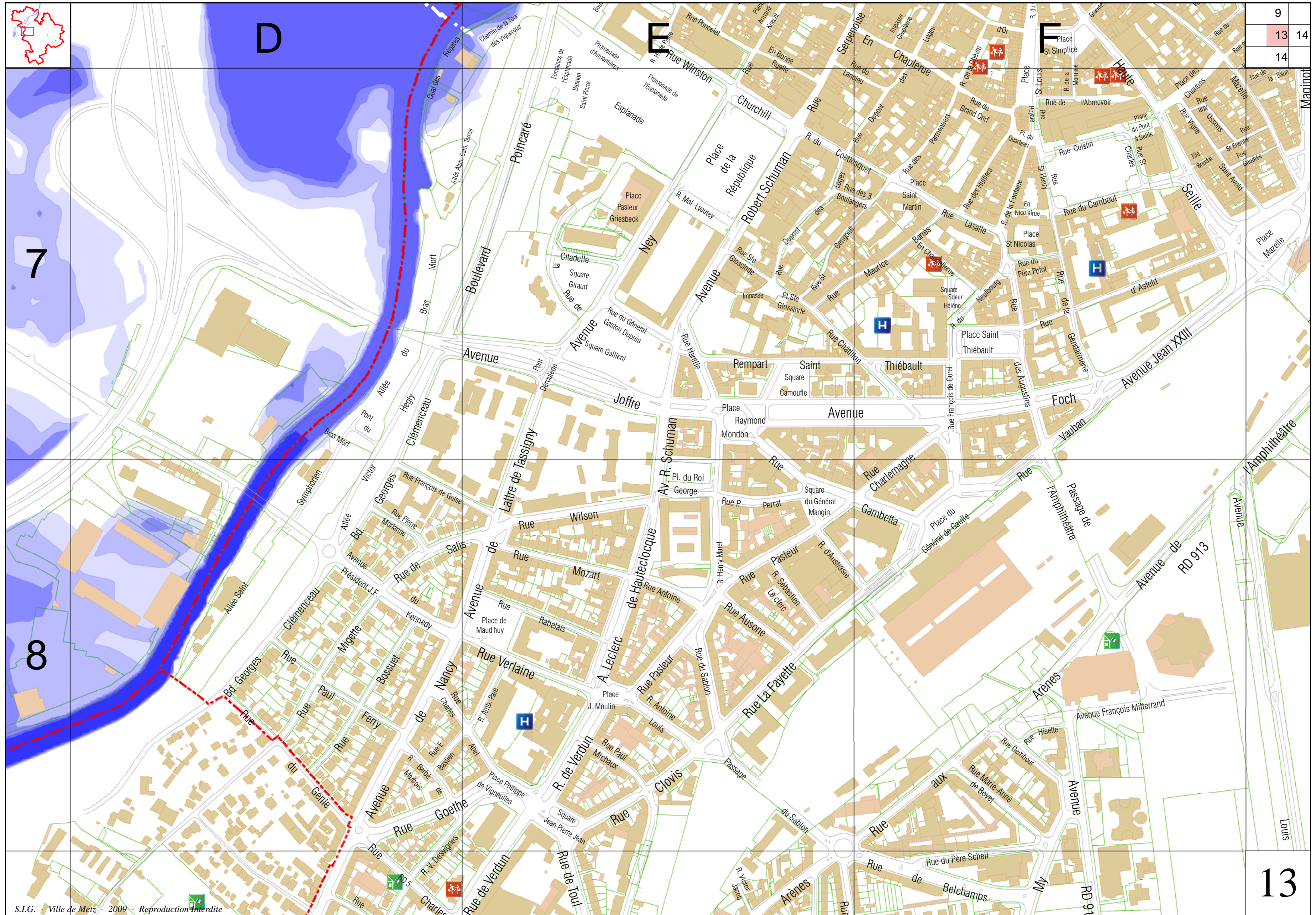
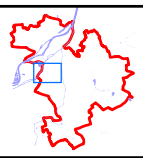
4	
8	9



5	8	9	10
		13	



	6	
9	10	11
	14	



9	13	14
13		
14		

7

8

D

E

F

13